

'Kanpai ,Cheers ! with the grandest Buddha in the world (wood curving)'

Special appreciation and Japanese Sake tasting in Kaiko-ji Buddhist Temple

Kaiko-ji Buddhist Temple was built in 1228, which is famous for the huge statue of Buddha. The statue of Buddha is about 10 meters (33 feet) high including the pedestal and the rear section. (they say that it is the world largest wood curving one)You will be allowed to enter the places where you can not enter usually in Kaiko-ji, to see the statue of Buddha and treasures of the temple that can not be seen usually. After that, you will experience Kanpai!, Japanese Sake tasting hosted by the owner of a Sake brewer,Who explores ginjo-shu and what distinguishes it from regular sake, how it is made, and its history and tradition. Taste their premium sake that cover the range from standard junmai-shu all the way up to the premium daiginjo classification. It is carefree and not too formal. It is easy behavior. You can enjoy at the table and chairs.

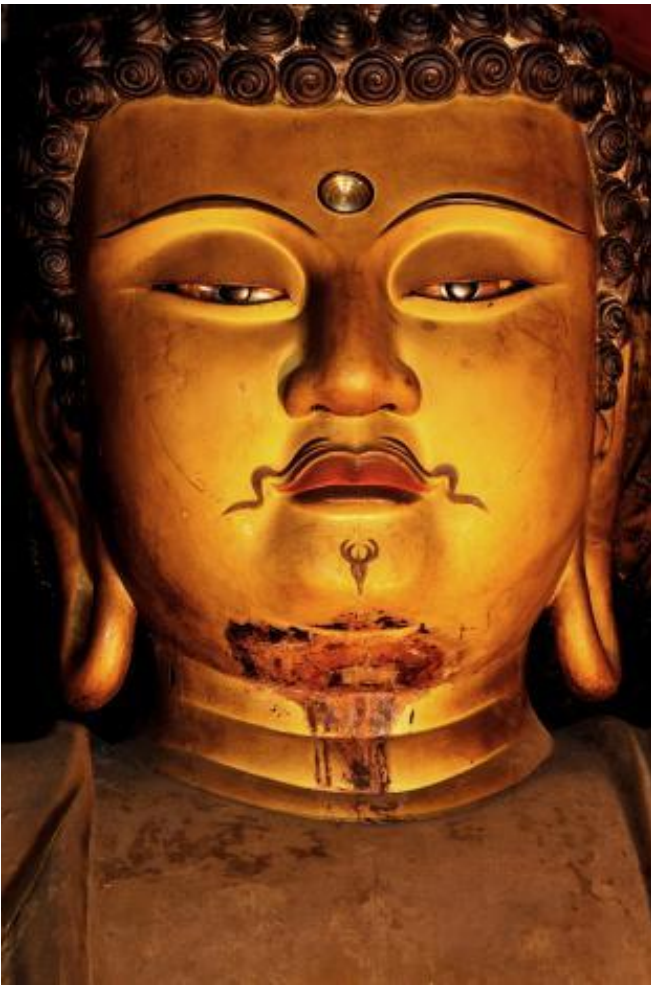
Period
Jan. 01, 2017
Dec. 30, 2017 (Reservation required)
Time required : 60-90 min
Place: Kaiko-ji Buddhist Temple

Sennyu-ji, Hikashiyama, Kyoto-city, Kyoto, Japan
Access : 20min from JR Kyoto Sta by car.
Minimum and maximum number of participant 2 - 20 persons
Price : 120,000yen - / group
Host : the owner or Toji of a Sake brewery.

[Included in the price]
Special appreciation of the temple, Sake Drink,

Reservation
Please e-mail to nanaLLC/ Sake+travel. We'll reply after confirmation. Address : sake@7yume.org

Kaiko-ji Temple is one of major sub temples of Senny-ji Temple.
Senny-ji Temple is a Buddhist temple in Higashiyama-ku in Kyoto, Japan. For centuries, Senny-ji was a mortuary temple for aristocrats and the imperial house. Located here are the official tombs of Emperor Shij and many of the emperors who came after him.
Senny-ji was founded in the early Heian period.The origin of this temple, which is commonly called Mitera or Mi-dera, can be traced back to the Tench era (824-834) when the priest Kkai established a small temple in this location. That modest structure and community were initially known as Hrin-ji. The major buildings in Senny-ji was very much reconstructed and enlarged in the early 13th century



Kaiko-ji Temple has Yuzu Shrine Benzaiten, which is a place noted in connection with Nintendo ,a Kyoto based and the world largest video game company.They say that the president had been paying a visit to a Shinto shrine almost daily before and after they became video game business company and made it big in 80s.
*Benzaiten is the goddess of everything that flows: water, words, speech, eloquence, music and by extension, knowledge.

