

# Aged Sake in Nikko/ Utsunomiya

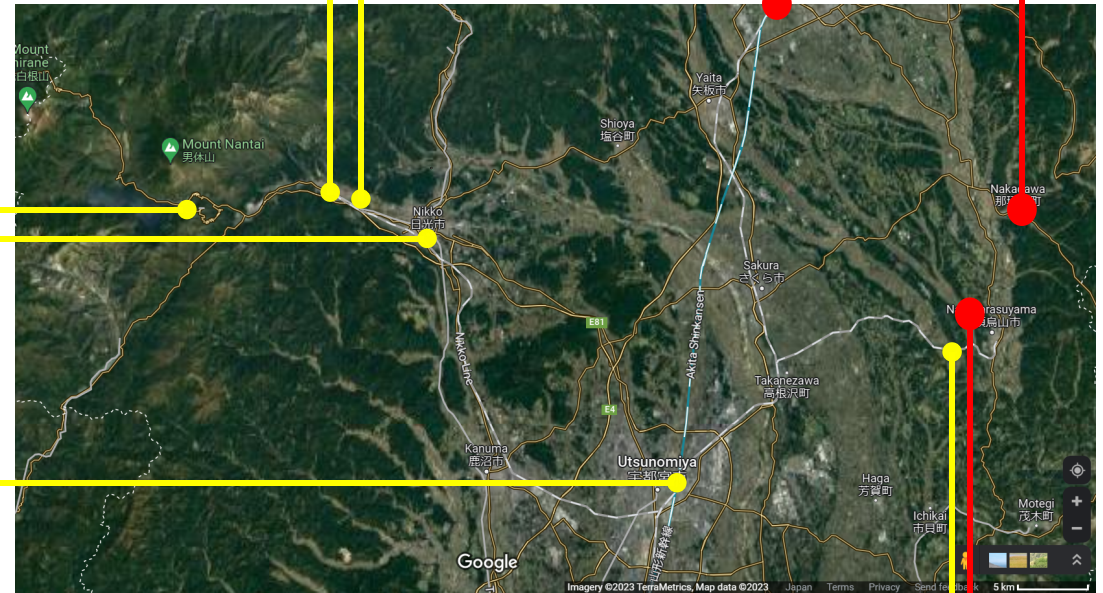
Access: 45 minutes drive from Utsunomiya Station (shinkansen).  
60 minutes drive from Nikko Station

For reference/  
There are many world-class contemporary museums in the northern part of Tokyo. There are many world-class contemporary museums in the northern part of Tokyo. Works by architects Arata Isozaki and Kengo Kuma stand out in particular.

Nikko Toshogu Shrine  
Nikko Tamozawa Imperial Villa Memorial Park  
Stone Plaza (Museum) Bato Hiroshige Museum

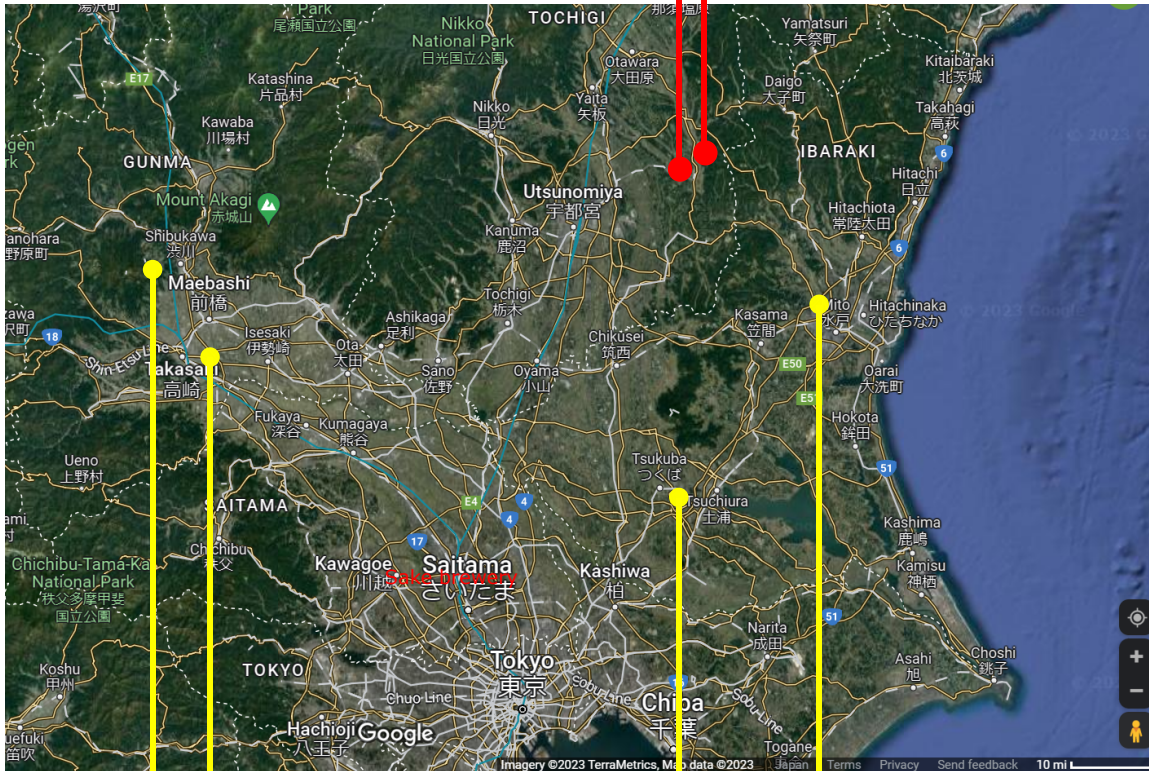
The Ritz-Carlton  
Nikko Station

Utsunomiya Station



Sake brewery  
Bato Hiroshige Museum (Kengo Kuma)

Sake brewery  
Taki Station



Gunma Pref Modern Art Museum (Arata Isozaki)  
Hara Museum ARC (Arata Isozaki)

Mito Art Museum (Arata Isozaki)  
Tsukuba Center Building (Arata Isozaki)